



Building Excellence.



NEENAH
HIGH SCHOOL

NJSD New High School

Miron Project Number 210210

Monthly Project Progress Report September 2022



Table of Contents

- Executive Summary
- Action Items
- Design Items
- Quality
- Schedule
- Risk Management
- Progress Photos
- Glossary of Terms

In this issue...

- Slab on Grade Pours
- Structural Steel & Masonry
- Interior & Exterior Steel Studs
- MEP Rough-Ins
- Sitework on Athletic Fields
- Roofing
- Interior Finishes



Distribution List

Dr. Mary Pfeiffer
District Superintendent
Neenah Joint School District
mpfeiffer@neenah.k12.wi.us
920-751-6800 x 10100

Tim Kippenhan
Vice President & COO
Miron Construction Co., Inc.
Tim.kippenhan@miron-
construction.com
920-969-7053

Matt Wolfert
President
Bray Architects
mwolfert@brayarch.com
414-226-0200

Amanda Manteufel
Project Executive
Miron Construction Co., Inc.
Amanda.manteufel@miron-
construction.com
920-328-1777

Ryan Sands
Vice President
Bray Architects
rsands@brayarch.com
414-290-1981

Michael Huffman
President
Huffman Facility Development
Mhuffman@huffmanfd.com
608-332-4112

Our *commitment* reaches beyond construction;
our *passion* brings *dreams* to life.

Executive Summary

Site Activities

- Maintenance building masonry continued
- Interior finishes started in both concession stands
- SOG concrete pours continued throughout the building including the auditorium seating
- Exterior wall studs and sheathing continued throughout the building
- Interior and exterior steel stud framing continued in various parts of the building
- Drywall continued in the North classroom wings
- Painting continued in the North classroom wings
- Ceiling grid started in the North classroom wings
- Casework began to be installed in the North classroom wings
- Aluminum window frames and glass install continued on the North end of the building
- Metal wall panels continued to be installed on the North classroom wings
- MEP in-wall and above ceiling rough ins continued throughout the building
- Roofing continued in the Southeast corner of the building
- Structural steel and metal roof deck continued to be set
- Stairs continue to be erected throughout the building
- Masonry walls throughout the building continue
- Geothermal manifold piping completed
- Concrete flatwork and curb and gutter prep continues around the site
- Site grading of the athletic fields continued
- Athletic field flat drain and irrigation systems continue to be installed
- Began installing the remaining bleacher enclosures at the football stadium

Major Milestones / Accomplishments

- Asphalt paving of the tennis courts and track completed
- Casework in the North classroom wings started

Upcoming Milestones

- Underground plumbing completion
- Building temporarily enclosed for colder temperatures
- Community Milestone Moment #3
- Steel Topping Out Ceremony

Key Issues and Concerns

- Material availability and increasing lead times

We exist to create...

Relationships

...built on honesty and integrity, with clients, partners, and employees.
At Miron, people come first.



Action Items

Key Accomplishments

- Asphalt paving on the tennis courts and track
- Geothermal manifolding completed
- Casework install started in the North classroom wings

Areas of Concern

- Material availability
- Material cost increases
- Submittal review times

Action Item List

- Continue to monitor material lead times and material delivery dates
- Monitoring a long lead time and delivery date for electrical switchgear
- MEP contractors involved in BIM must continue to maintain the coordination schedule so work can be coordinated with other subcontractors

We exist to fulfill...

Dreams

...and assist our clients in turning their visions into realities.



Design Items

Areas of Concern

- Critical to continue to complete submittal revisions and respond to RFI's to maintain project schedule

Submittals

- Submittals from Bid Package 01 contractors are being received and reviewed
100% of submittals have been submitted and reviewed
- Submittals from Bid Package 2A, 2B, and 2C contractors are being received and reviewed
100% of submittals have been submitted and reviewed
- Submittals from Bid Package 3A contractors are being received and reviewed
100% of submittals have been submitted and reviewed
- Submittals from Bid Package 3B contractors are being received and reviewed
100% of submittals have been submitted and reviewed
- Submittals from Bid Package 04 contractors are being received and reviewed
100% of submittals have been submitted and reviewed
- Submittals from Bid Package 05 contractors are being received and reviewed
91% of submittals have been submitted and reviewed

Requests for Information

- 38 RFI's were generated this month and 32 have been answered and returned
- 6 open RFI's that the design team will return in early October

We exist to promote...

Innovation

...and be the leader in providing and utilizing the best tools, processes, and safety measures.



Quality

Inspections

- Fox Crossing Utility
- Compaction Testing
- Concrete Testing
- Rebar Inspection
- Bearing Capacity
- Structural Steel Testing
- MEP Underground Testing
- State & Local Building Inspections

Test Results

- Concrete and steel test reports are being received as areas are completed
- Soil compaction reports are being received as areas are backfilled with onsite material

Quality Issues & Resolution

- None

We exist to develop...

Solutions

...that exceed the needs and requirements of our clients, partners, and employees.

Schedule Summary

Schedule Update

Labor Force Report

Veit - averaging 6 workers each day working on earthwork and wrapping up storm sewer piping
Miron Concrete - 14 workers setting forms and pouring concrete slabs
Miron Steel - 12 workers erecting steel throughout the building
Miron General Trades - 12 workers each day working on rough carpentry
Miron Masonry - 18 workers laying structural block in various areas of the building
ECS Midwest - 1 worker testing concrete ensuring it meets the specification
GO Loop - 5 workers manifolding and connecting the geothermal wells
Appleton Lathing Corporation - 30 workers framing walls, hanging drywall, and taping/mudding drywall
Corcoran Paint - 6 painters working in the North classroom wings
Corcoran Glass - 4 workers installing aluminum frames and glass
Tweet Garot - 20 workers installing MEP underground utilities in classroom wings
Hurckman Mechanical - 18 workers installing HVAC equipment and rough-ins
Blair Fire Protection - 6 workers installing sprinkler system piping
EC&D - 6 workers installing low-voltage rough-ins
Van Ert - 25 electricians working on in-wall electrical and above ceiling rough-ins
Up-Right - 4 workers installing light pole bases and underground electrical
Crafts Roofing - 8 roofers working on roofing throughout the building
Muza Sheet Metal - 4 workers installing metal panels
CM Morris - 3 workers fireproofing steel throughout the building
Walsh Masonry - 8 masons laying block for the concession stands
Martell Construction - 4 workers pouring concrete sidewalks and flatwork around the site
MCC - 6 workers prepping and paving asphalt
Schmalz Landscaping - 5 workers fine grading and seeding

Delays

- Weather
 - 3 weather days in September
- Materials & Labor
 - Currently None
- Design
 - Currently None
- Owner
 - Currently None

Key Issues / Concerns / Recommended Action Steps

- Answering RFI's in order to maintain schedule
- Continuing to monitor material lead times
- Tracking weather days to determine any schedule impact

We exist to serve each...

Community

...in which we live and work, giving back whenever and wherever we can.

Risk Management

Key Safety Statements & Focus Issues

- 1025 team members have been orientated to date
- Approximately 235-255 people on-site per-day
- Orientations and background checks completed before being permitted to work on site
- Stretching and safety meeting is daily at 6:00 AM & 7:00 AM with all contractors
- Weekly site-wide stand-down safety meeting
- Daily site safety audits and weekly contractor safety walks
- Safety focus is fall protection and proper tie off
- Heavy equipment includes: 4 cranes, 14 skytraks, 2 dump trucks, 1 front end loader, 3 back hoes, 1 roller, 1 dozer, 1 offroad haul truck, 12 UTV's, and 36 company vehicles
- Communication is key to the team's success with the amount of equipment moving on site
- Site traffic control is in place due to lots of moving equipment and vehicles on site
- Excavations are barricaded when no work is being put in place
- Red danger tape is put up in areas where overhead work and limited access zones are located
- Masonry walls are braced as erected and red danger tape is being used in limited access zones
- Elevated work permits are submitted and reviewed for each contractor working on the roof



Progress Photographs



Administration area concrete SOG pour
(09/1/2022)



Completed asphalt on track
(09/08/2022)



Glass installed in North classroom wings
(09/20/2022)



Future South grandstand entrance
(09/21/2022)



Completed grandstand stairs and ADA ramp
(09/21/2022)



East courtyard exterior steel stud framing
(09/21/2022)

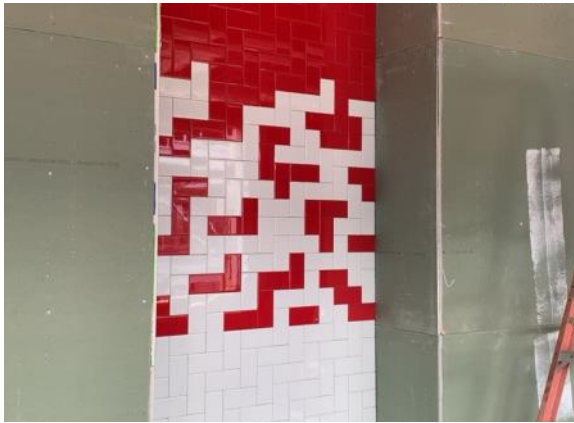
Progress Photographs



Completed casework in North wing classroom
(09/21/2022)



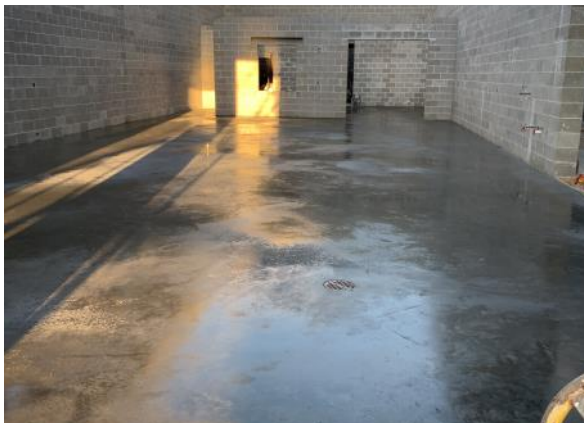
Auditorium stepped seating structure gets set in place
(09/27/2022)



Ceramic wall tile at drinking fountain location
(09/27/2022)



Completed roof access stair
(09/27/2022)



Finished floor in the stagecraft/receiving area
(09/29/2022)



SOG in the future art labs getting poured
(09/29/2022)

Glossary of Terms

- **Bid Package (BP):** a set of documents that contains drawings, specifications, and scopes of work for a specific set of construction activities that are sent out to contractors for competitive bidding. Ex: Bid Package 01 contained all the drawings, specifications, and scopes for the exterior site portion of work on the project.
- **Request for Information (RFI):** a document during the construction phase of a project used to get clarification on the project documents between the contractor and the architect/engineer. Ex: The contractor submits an RFI to the architect about a missing dimension on the drawings.
- **Submittal:** documents such as shop drawings, product data, material data, and samples to confirm that the correct products will be installed on the project. Ex: The flooring contractor submits a sample of the carpet they plan to install to ensure it is the correct color.
- **Compaction Report:** a report generated by an engineer noting how dense the ground is in a certain location. Ex: The soil below a road is tested to ensure the soil is firm enough to handle the weight of cars driving over it.
- **Concrete Masonry Unit (CMU):** usually a rectangular prism shaped structural member that is cast or extruded and are comprised of designed aggregates, cement, and water. Ex: The most common occurrence of CMU units are in stairwells of a commercial building. They look like legos stacked on top of one another.
- **Building Information Modeling (BIM):** the process of identifying and resolving constructability issues using 3D models developed by the design team and subcontractors. 3D models are overlaid, conflicts are identified, model adjustments are made, and installation drawings are produced which allow field teams to accurately install their systems to match the final coordinated 3D model.
- **Precast Concrete Wall Panel:** a structural piece of concrete that is cast offsite at a production facility to specific dimensions in a mold, cured for a duration of time, and set in a final location. Precast panels can be used in lieu of a masonry wall, concrete block wall, or steel stud wall. The new high school will have precast wall panels in the auditorium and the auxiliary gym.
- **Slab on Deck (SOD):** a concrete slab that is poured on top of metal decking at an elevated location such as a second or third floor of a building. Together the metal deck and concrete slab make up the floor structure of the building.
- **Slab on Grade (SOG):** a concrete slab that is poured at the ground elevation of the building. This type of slab is poured directly on a compacted stone base.

We exist to develop...

Solutions

...that exceed the needs and requirements of our clients, partners, and employees.